

# 8. Beyond Holmfirth: Holmbridge & Cartworth Moor

Duration: 1½ Hours

*These two settlements are located in the heart of Summer Wine Country, close to its capital, Holmfirth. Holmbridge is the younger of the two, growing up in the nineteenth century as a result of the Industrial Revolution. Mill owners, attracted by the availability of water to power their mills, built mills along the stretch of the River Holme, which runs through the village. However, the water which brought employment and prosperity, also brought disaster over the years, the village being subjected to numerous floods, the worst being the flood of 1852 in which many villagers lost their lives. Cartworth Moor, on the other hand, is located high on the hilltops and was thus settled long before Holmbridge and indeed was mentioned in the Domesday Book of 1086 when it was described as the 'largest settlement in the Forest of Holne' (Holne was the name for the area we now know as Holme). There is no actual village of Cartworth and the name is used to describe a collection of hamlets just outside Holmfirth.*

This walk begins in Holmbridge near **Holmbridge Cricket Club** (below). Cars can be parked on **Digley Road**, a narrow road by the cricket field opposite the church. There are no public toilets on this walk but the walk begins and ends close to The Bridge public house in Holmbridge.



Walk along the main road passing **Holmbridge Parish Church** on your left. At a bend in the road take the left fork signposted 'Yateholme' (the right fork takes you to Holme village). Walk over the bridge which crosses the **River Holme** and shortly afterwards take a left up a hill. This road eventually joins Dobb Top Road.

Carry on up to the top of Dobb Top Road until you reach the school. At this point take the partially cobbled track which runs up the side of the school and continue along this track until you reach a group of houses. Walk through this settlement. On reaching the last house on the right take the stone steps just at the side. This public footpath goes up the side of a field. When you reach the road, look back and you can glimpse **St David's Church** and the cricket ground in the valley bottom below. From this viewpoint you get a real sense of the vulnerability of the buildings in the valley bottom to the floods that the area has suffered over the years.

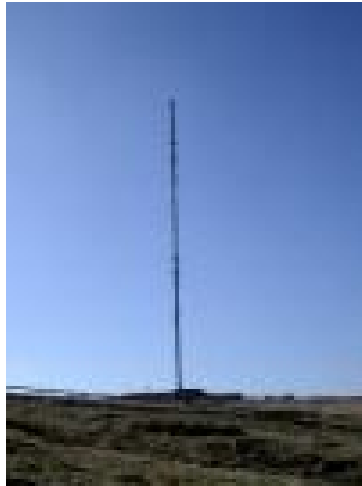
Cross over the road and continue on the public footpath up the next field. At the top of this field continue into the next field heading for the top right corner. Go through a gap in the wall/or a gate into a third field. Once in this field aim for the left hand corner just beyond a mound where there is a gap in the wall marking the footpath. At this point the remains of the old quarry markings are clearly visible above you.

Go through the gap in the wall and walk parallel with the next wall on your right. Pass through the stile to the right of the gate into the next field. Keep the wall on your left and then go through another stile with a rusty but ornate wrought iron gate. Follow the green track round to the right. The settlement you are passing through is called **Hill House**. Walk through Hill House (passing between the houses and their gardens) up the track until you meet the road. (There is a bench here on the left at which you may want to rest and enjoy the views). Cross directly over the road and go up **Stony Gate**. Just after the public footpath on the left Stony Gate becomes Gill Lane. As you walk up Gill Lane you will see to the right an incongruously large 'Welcome to CMCC' sign. The home of **Cartworth Moor Cricket Club** is a perfect place for a rest or picnic with its numerous benches and open outlook.



Cartworth Moor CC, 1935

From the cricket ground retrace your steps for about 200 yards and turn sharp right onto a downhill green path. This descends for a short distance and then joins the road. Walk along the road to the right, pausing at the bench on the left side of Royd Lane to enjoy the views of Castle Hill straight ahead and Holmfirth and Upperthong directly across the valley. Follow the road round to the left (you can see **Holme Moss Transmitter** ahead).



**Holme Moss**

After a couple of hundred yards take the public footpath on the right (opposite a driveway). Go down the rough steps and through the gate into a field. Walk through this field keeping the wall on your left and down through a gate into another field, again keeping the wall and the stream on the left. The wall soon becomes a fence; follow it down until you reach a gate which will take you down some steps and into the woods.

Take the path down through the left side of the wood until you reach a crossroads (the wood seems to peter out here). Turn right and head towards the mill. Cross a bridge over the River Holme and then turn left to join the **Holme Valley Riverside Way**. Continue between the water supply for the mill and the River Holme until you reach the end of the riverside path. You are now in **Hinchliffe Mill**.

Take the road between the houses, ignoring the footbridges on the left. As you reach the road, cross straight over and continue up **Old Road** (where there are some fine examples of weavers cottages) until you reach the main road. Cross the main road and go up a steep cart track (Stubbin Lane). Go through a white gate and continue up a partially paved path until you reach a metal gate. Do not go through the metal gate but turn left just before it.

Walk along the faint path across the field towards a housing development. As you walk across the field you will see Holme Moss Transmitter in front of you and **Dobb Wood** stretching up the other side of the valley on the left. Continue through the gap in the wall into the next field and then go over the stile into a third field. Go through another stile and then at the bottom corner of this field go through a gate and along a narrow path between two walls.

At the end of the path turn left opposite **School House** along Field End Lane. As you descend down this lane you will see **St. David's Church** (below) and **Holmbridge** cricket ground emerging in the valley bottom below. Continue along the lane with the cricket ground below you to the right, and then aptly coming out next to the **Bridge** public house in Holmbridge for those in need of refreshments. You are now back at the start of the walk.

